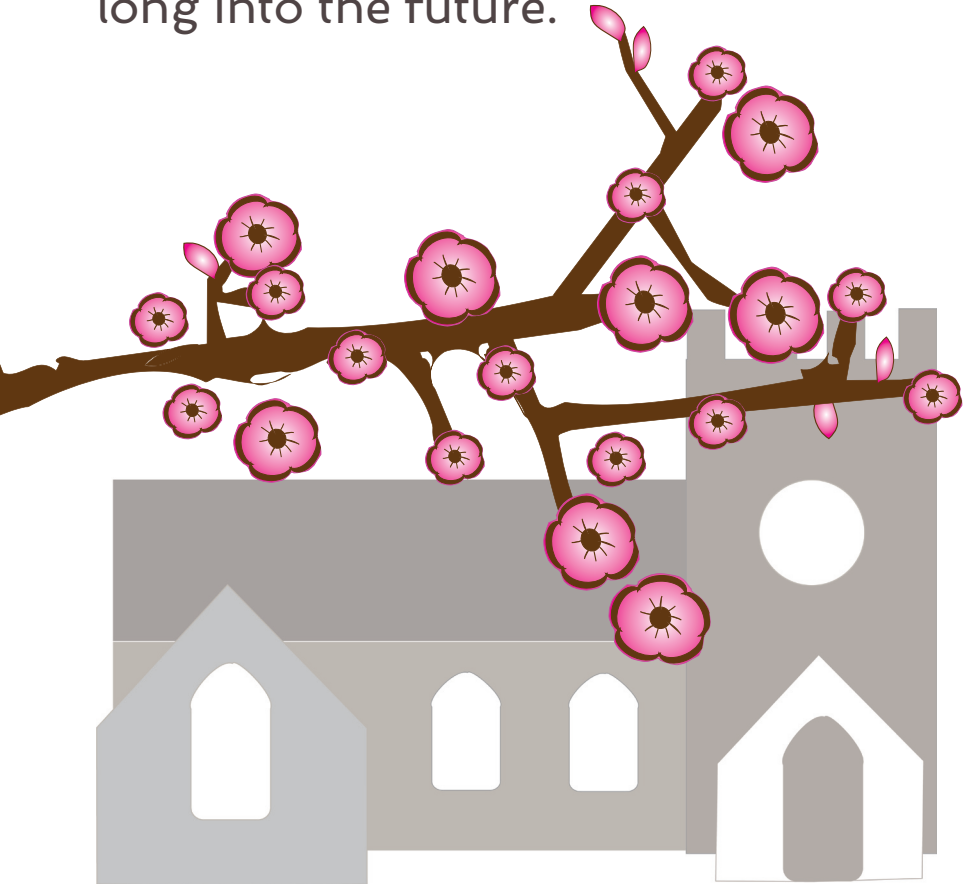


HELP ST MARY'S CONTINUE TO BLOSSOM



We need your support to ensure
St Mary's continues to grow
long into the future.



Leaving a Legacy to St Mary's

WHY LEAVE ST MARY'S A GIFT



Thinking about what happens after you are gone is never easy. Of course, you probably want to ensure that those you care about are supported.

Once you have provided for your loved ones, leaving some money for St Mary's can help you ensure that the church continues to blossom long into the future.

Over the years, legacies have helped with the cost of ministry and maintenance of our historic church building,

as well as supported work with Children and the wider community of Thorpe.

Whatever you feel able to give will help St Mary's carry on its valued work and mission.



Remember, legacies to registered charities in the UK, like St Mary's, are tax exempt. If you leave money to the Church or another charity in your Will, it will be paid out before inheritance tax is deducted.

HOW TO LEAVE ST MARY'S A GIFT



Leaving a gift in your Will is an important decision, but it does not need to be complicated.

It is important that you discuss your wishes with your loved ones, so that they understand that leaving a gift to St Mary's or another charity is important to you.

If you already have a will, you can add some wording or a codicil. We have given you some suggested wording below, but we

recommend you consult a solicitor before making any changes.

If you do not already have a will, we suggest you contact a solicitor or will writing service to make sure your wishes are carried out as you would like them. You will also need to appoint some executors to help administer your estate.

Suggested wording (Codicil) for your will:

“ I give X% of my residuary estate OR I give the sum of £X (pounds only) free of all taxes to the Thorpe Parochial Church Council in the Diocese of Guildford (Charity No: 1176929) for its general purposes, and I declare that the receipt of an officer of the Parochial Church Council shall be a sufficient discharge to my executors and trustees.”

We advise you to consult a solicitor.



www.stmaryschurchthorpe.co.uk

stmaryschurchthorpe@outlook.com

St Mary's Church, Church Approach, Thorpe, TW20 8TQ

Charity Number: 1176929